

COSMIC KISS

FABRICS AND MORE BY CARLUCCI





WHICH WORLD WOULD WE TRAVEL TO IF ANYTHING WERE POSSIBLE?

The new **CARLUCCI** collection **COSMIC KISS** stands for infinity and passion. With it, we enter a cosmos that exudes a beguiling and mysterious beauty. We immerse ourselves in an inspiring fantasy world where colours subtly merge, like in a distant galaxy. The light travels over shimmering objects to airy, soft surfaces that radiate pure naturalness.

COSMIC KISS brings together perfect crafting, innovation and modern elegance in a new 'historical futurism' that links the past and the future. Particularly appealing are the antique and exotic style elements, which are reinterpreted and combined with a purist look and feel.

The collection features fragile, porcelain-inspired designs, precious polychrome velvets and elegant, pictorial embroidery. A sheer, delicately shimmering linen satin and a pure mohair velvet exude timeless understatement. They meet unique highlights like spray-dyed faux furs and metallic jacquards. Super-soft woollen qualities, extensive performance items and a large selection of innovative, sustainable textiles reflect our passion for self-confident creativity and sensuousness. An opulent wallcovering collection and an extravagant wool rug bring cosmic radiance to any luxurious signature interior.

Accompany us into this new world where anything is possible!



KISSED BY CURIOSITY

Curiosity is where innovation and creativity begin. **KISSED BY CURIOSITY** is characterised by exotic influences and the colours and patterns of distant worlds, given a modern interpretation. Sophisticated motifs fascinate with their rich detail and tell their very own story. Energetic, mystical colours meet high-end textiles with a genuine “Arts and Crafts” esprit – a lively mix that embodies casual luxury.

KISSED BY CURIOSITY inspires with a portfolio of precious textiles, from opulent embroidery to eclectic cut-and-uncut velvet. Softly shimmering linen satin, an extra-voluminous bouclé and an elegant fil-coupé create self-confident highlights. Intense colours, exotic animal prints and authentic textures complete the extravagant look.









TOMORROWLAND CAI786 · TALISMAN CAI789 · TOPAZ CAI787 · TIME TRAVELLER CAI788 · TREASURE CAI780
VELLUTO GELATO CAI456 · COSMIC KISS CAI764



TOMORROWLAND CA1786



KISSED



TALISMAN CA1789 · TOPAZ CA1787 · TIME TRAVELLER CA1788 · TREASURE CA1780

BY CURIOSITY



TOMORROWLAND CA1786 · TREASURE CA1780 · TALISMAN CA1789





ADDICTED TO LOVE CA1790 · ENTER UTOPIA CA8273



ADDICTED TO LOVE CA1790 · ENTER UTOPIA CA8273



INSIDE UTOPIA CA1782 · WILD POETRY CA1777

TREASURE CA1780 · TALISMAN CA1789 · INSIDE UTOPIA CA1782



TREASURE CA1780 · TALISMAN CA1789 · MAGICAL MOHAIR CA1757

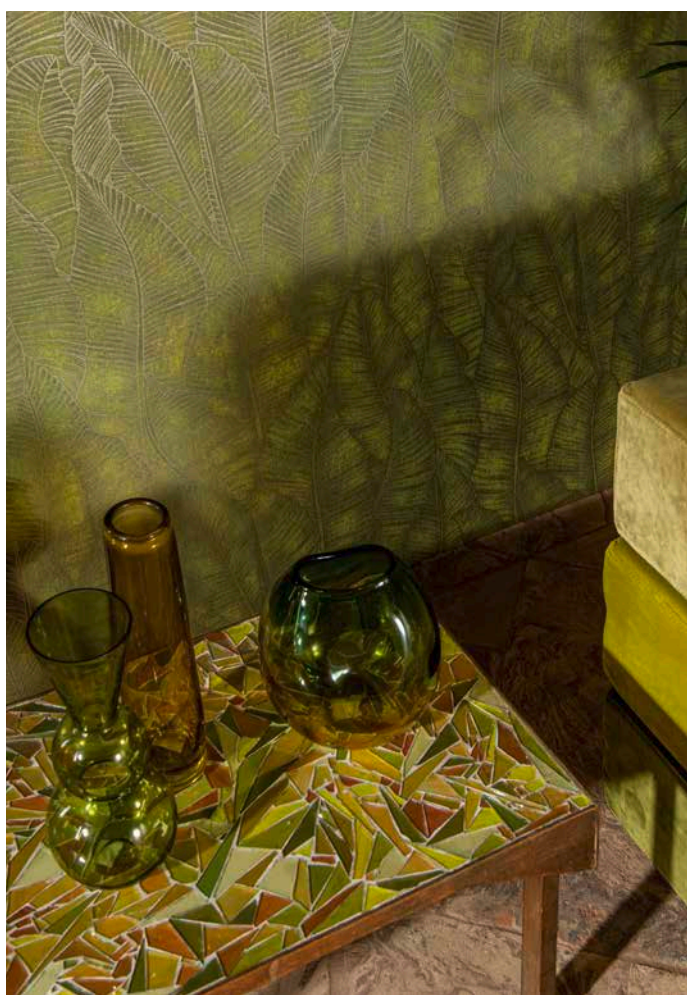


TREASURE CAI780 · TALISMAN CAI789 · MAGICAL MOHAIR CAI757 · INSIDE UTOPIA CAI782

COSMIC LEAVES CA8272 · CITY VELVET RELOADED CA7832



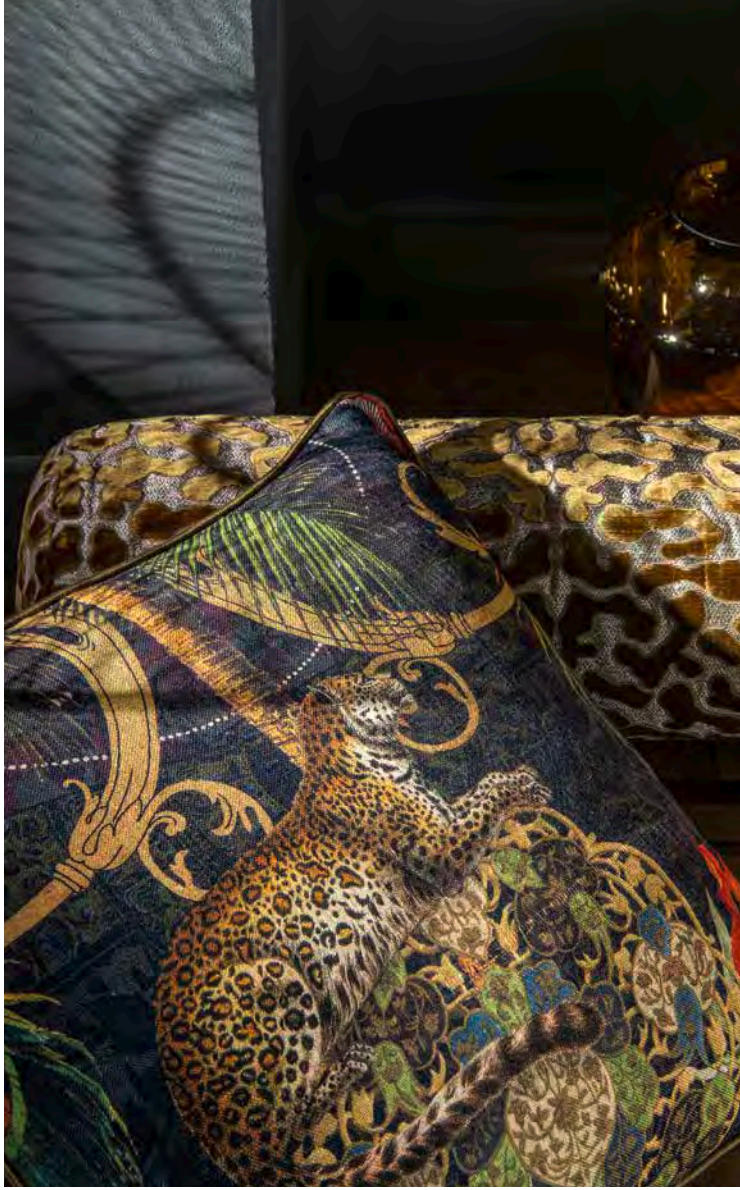
COSMIC LEAVES CA8272 · CITY VELVET RELOADED CA7832



LEISURE CA1810

KISSED

INSIDE UTOPIA CAI782 · TALISMAN CAI789



OPAQUE VELVET CAI805 · VELLUTO GELATO CAI456 · WILD BEAUTY CA8274 · ADDICTED TO LOVE CAI790



BY CURIOSITY



INSIDE UTOPIA CAI782 · TALISMAN CAI789 · OPAQUE VELVET CA1805 · VELLUTO GELATO CA1456
ADDICTED TO LOVE CAI790 · WILD BEAUTY CA8274

COSMIC KISS CA1764 · TIME TRAVELLER CA1788 · TREASURE CA1780 · CITY VELVET RELOADED CA7832



INSIDE UTOPIA CAI1782 · ENTER UTOPIA CA8273 · TOMORROWLAND CAI1786 · TALISMAN CAI1789
TREASURE CAI1780 · COSMIC KISS CAI1764



TIME TRAVELLER CAI1788 · TREASURE CAI1780 · COSMIC KISS CAI1764
CITY VELVET RELOAD CA7832 · VELLUTO GELATO CAI1456

LIGHTYEARS CA1803 · TOMORROWLAND CA1786 · COSMIC KISS CA1764



SOFT LINE CA1763



LIGHTYEARS CA1803 · TOMORROWLAND CA1786 · GOLD DUST CA1767 · COSMIC KISS CA1764

LIGHTYEARS CA1803 · TOMORROWLAND CA1786 · COSMIC KISS CA1764 · GOLD DUST CA1767 · COSMIC WORLD CA8276



TIMELESS ELEGANCE: COSMIC KISS

The luxurious **COSMIC KISS** embroidery is inspired by antique Asian works of art. Large birds surrounded by lush flowers were placed on pure linen twill using a wide array of yarns and embroidery techniques. Dense stitches of a voluminous cotton-polyester yarn lend the scenery a three-dimensional appearance, while fine metallic threads provide the bird's plumage with a delicate pattern and accentuate the branches. The elaborate embroidery was then painstakingly finished by hand by applying coarse jute yarn as three-dimensional knots to the branches.

COSMIC KISS exemplifies
the harmonious blend of natural beauty
and exceptional craftsmanship.



KISSED BY TENDERNESS

Soft, pure and elegant – the character of unspoilt landscapes and minimalist architecture inspired us to create **KISSED BY TENDERNESS**. The look is kept clean and natural, making the textiles in this theme a particularly sensuous experience. Subtle colours meet enchantingly fluffy haptics that radiate calm cosiness. High-quality wools, complemented by fine fibres such as linen, alpaca and mohair, have the potential to become timeless classics. They are accompanied by elaborately designed highlights that lend airiness and sophistication to any interior.

KISSED BY TENDERNESS offers a finely graded portfolio of super fluffy furnishing fabrics in a wide variety of textures. A polychrome, sporty embroidery can be combined with a room-high, expressively picturesque garden motif to fascinate and catch the eye. A particularly high-quality statement is made by a genuine mohair velvet in a dynamic colour range and casually elegant wools with a timeless mid-century style.





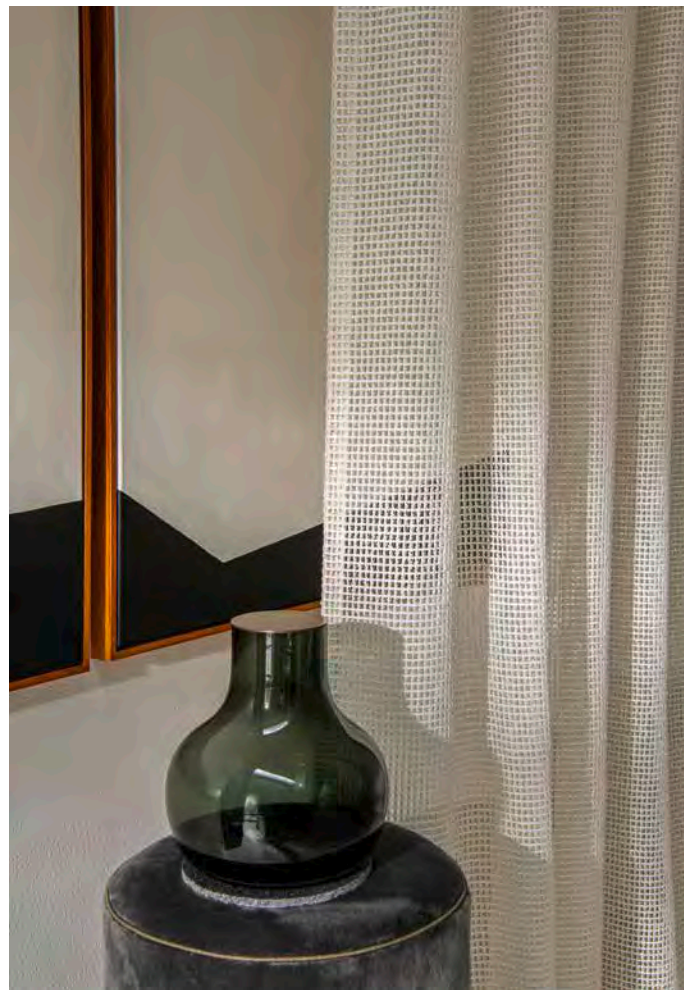




TENDER KISS CA1793 · EGDE OF HEAVEN CA1795 · TENDERNESS CA1791 · TENDER SOUL CA1794
TENDER TOUCH CA1792 · THE WILD ONE 7649



CATCH THE WIND CA1756 · COSMIC WORLD CA8276



SKYRIDE CA1796

KISSED

BY TENDERNESS



COSMIC WORLD CA8276 · CATCH THE WIND CA1756 · ASCENDENT RELOADED CA1758 · COSMIC GARDEN CA1776
VELLUTO GELATO CA1456 · EDGE OF HEAVEN CA1795 · TALISMAN CA1789 · THE WILD ONE 7649



THE WILD ONE 7649 · TALISMAN CAI789 · EDGE OF HEAVEN CAI795



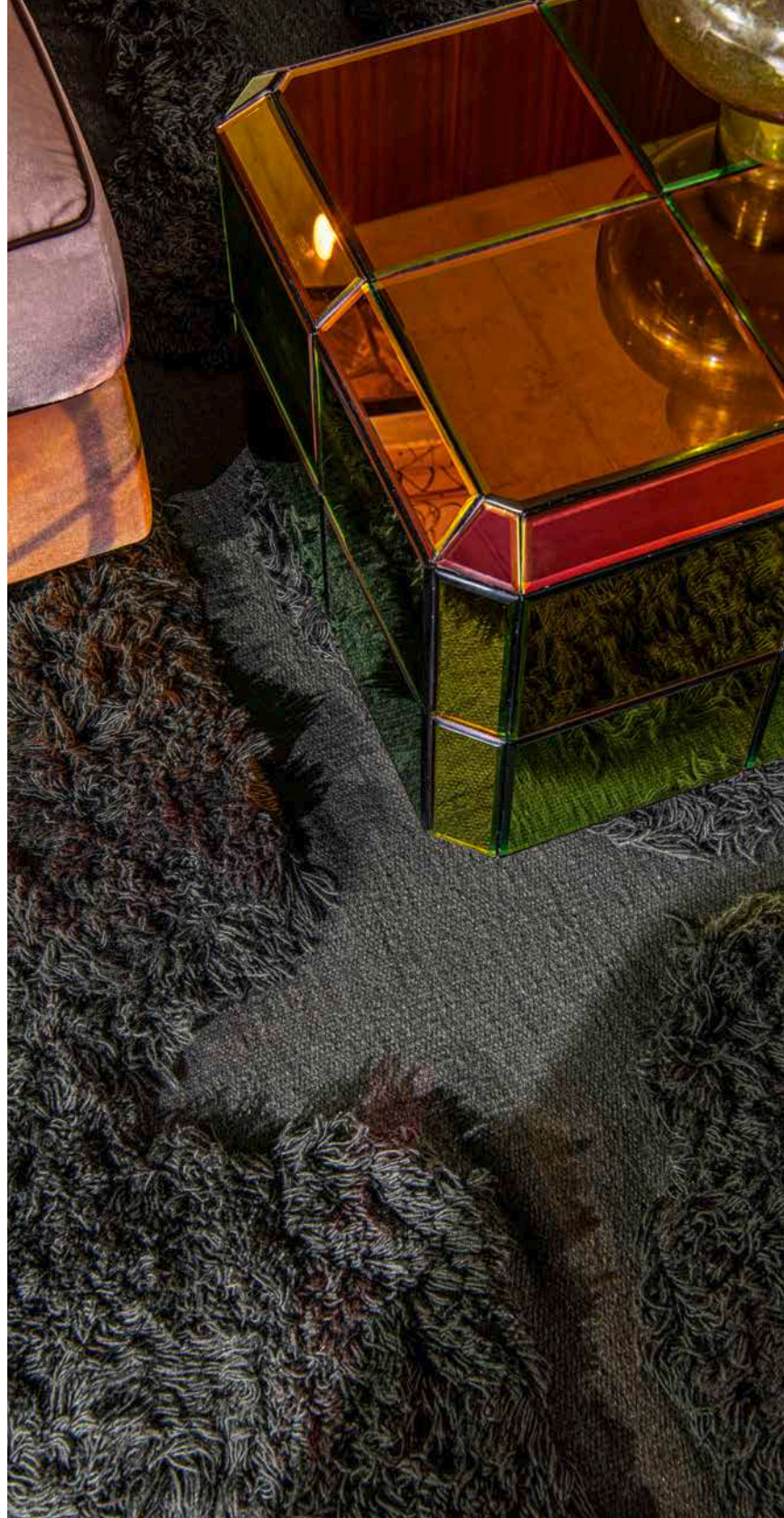
VELLUTO GELATO CAI456 · COSMIC GARDEN CAI776 · ASCENDENT RELOADED CAI758
EDGE OF HEAVEN CAI795

THE MAGIC OF WOOL

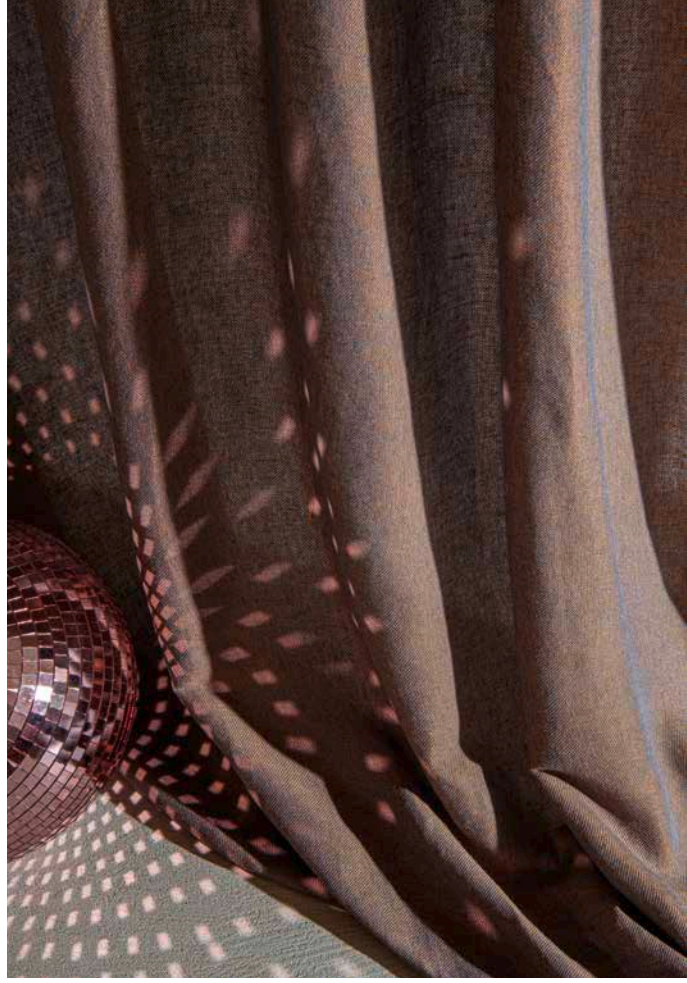
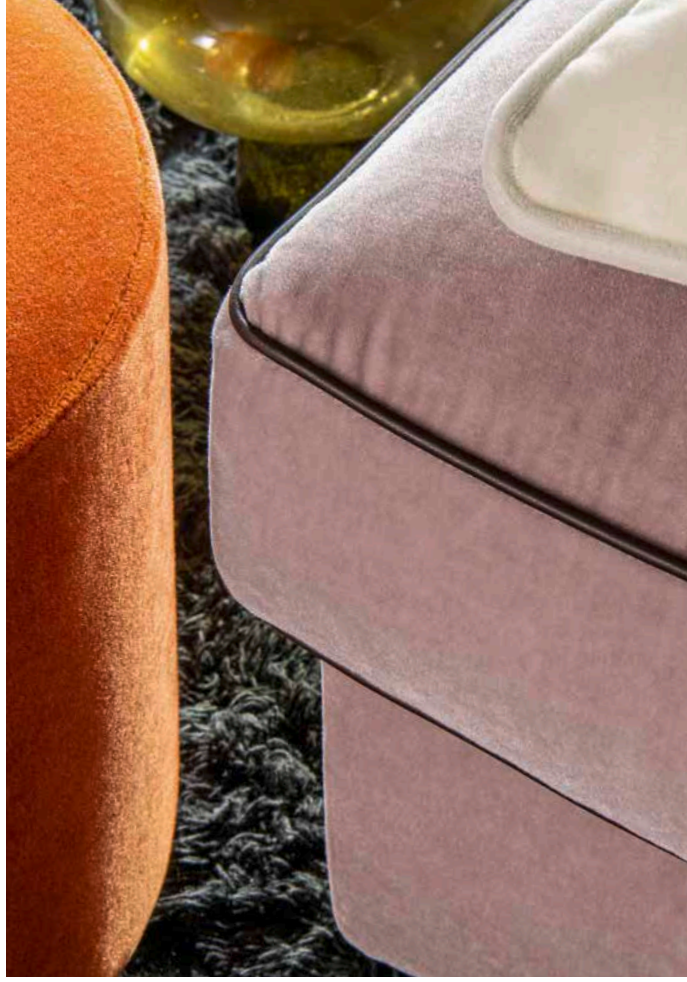
With this new product range, we present a high-end programme for true connoisseurs and lovers of genuine, soft wool and pure mohair, leaving nothing to be desired.

These high-quality natural materials have been spun into the finest yarns and further refined using elaborate manufacturing processes. They combine a cosy feel with a timeless, luxurious look. Wool and mohair are durable and have numerous unique properties, including their positive effect on indoor climates – they are breathable, regulate moisture and can equalise the temperature.

Discover **THE MAGIC OF WOOL** with us!

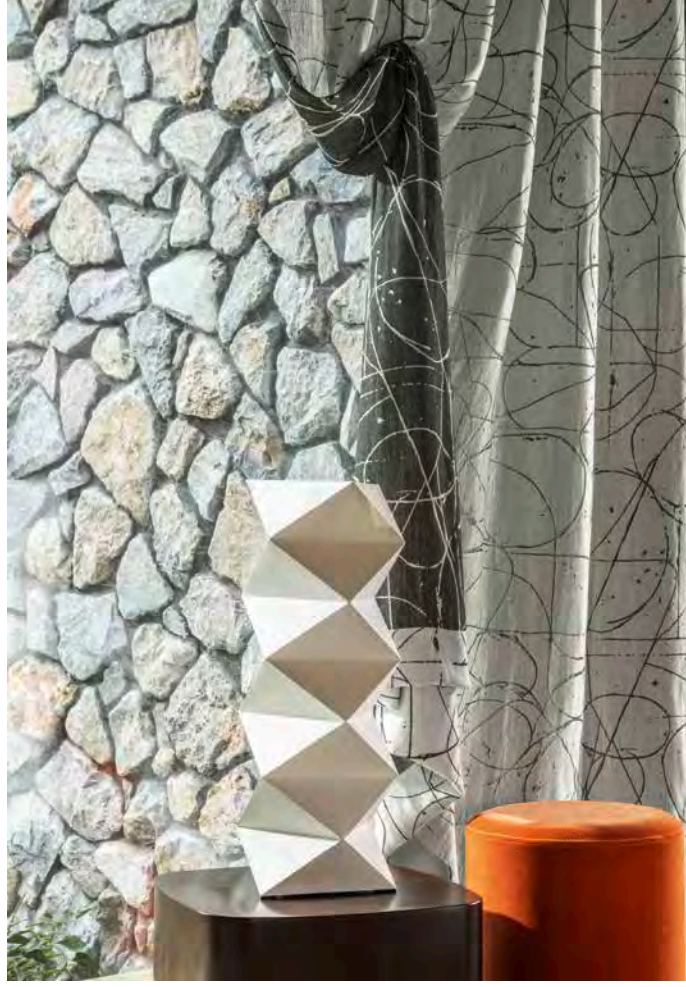


MAGICAL MOHAIR CAI757 · THE WILD ONE 7649

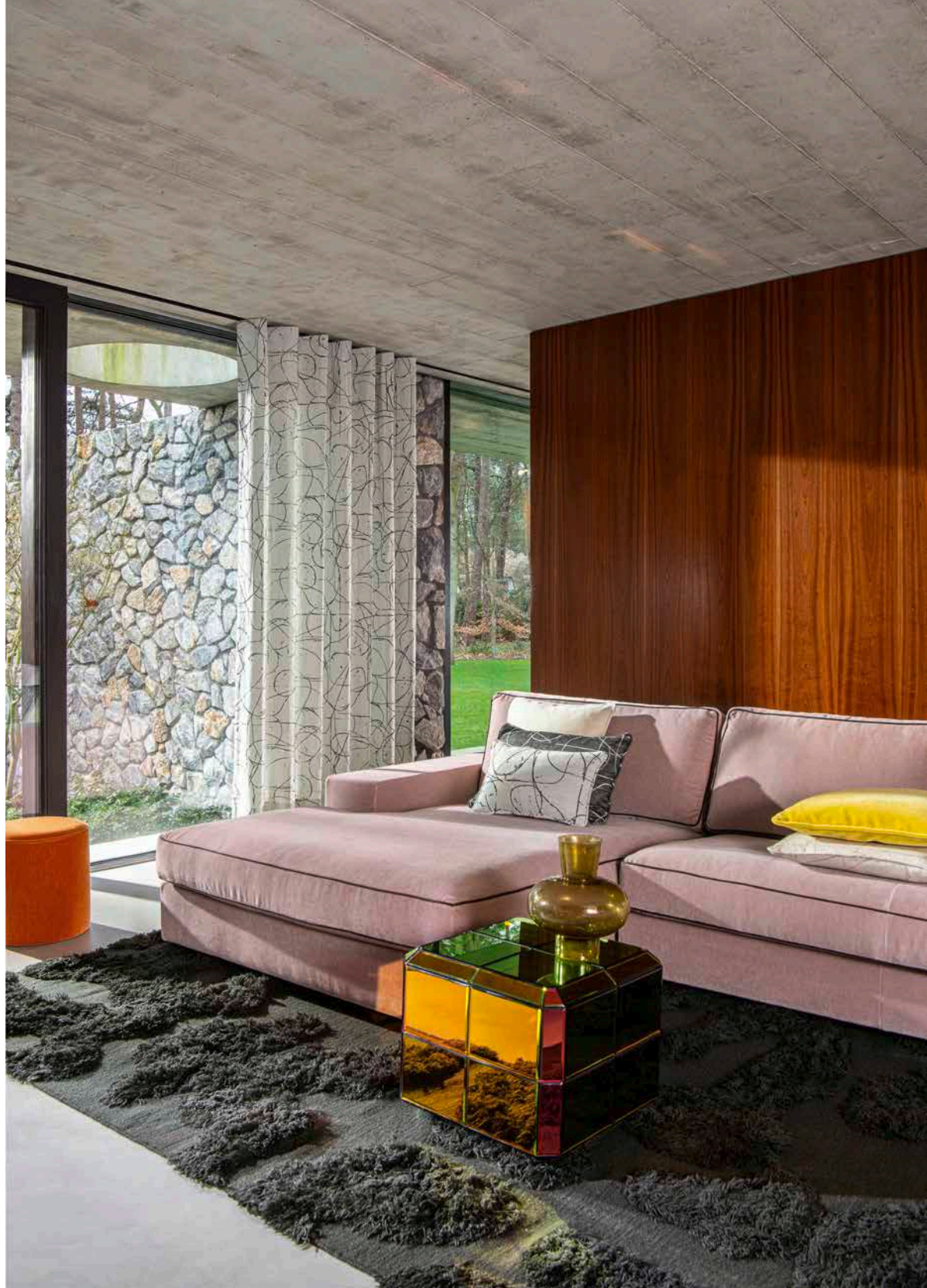


BE FREE CAI759

MAGICAL MOHAIR CA1757 · THE WILD ONE 7649



MAGICAL MOHAIR CA1757 · IN MY ARMS CA1761





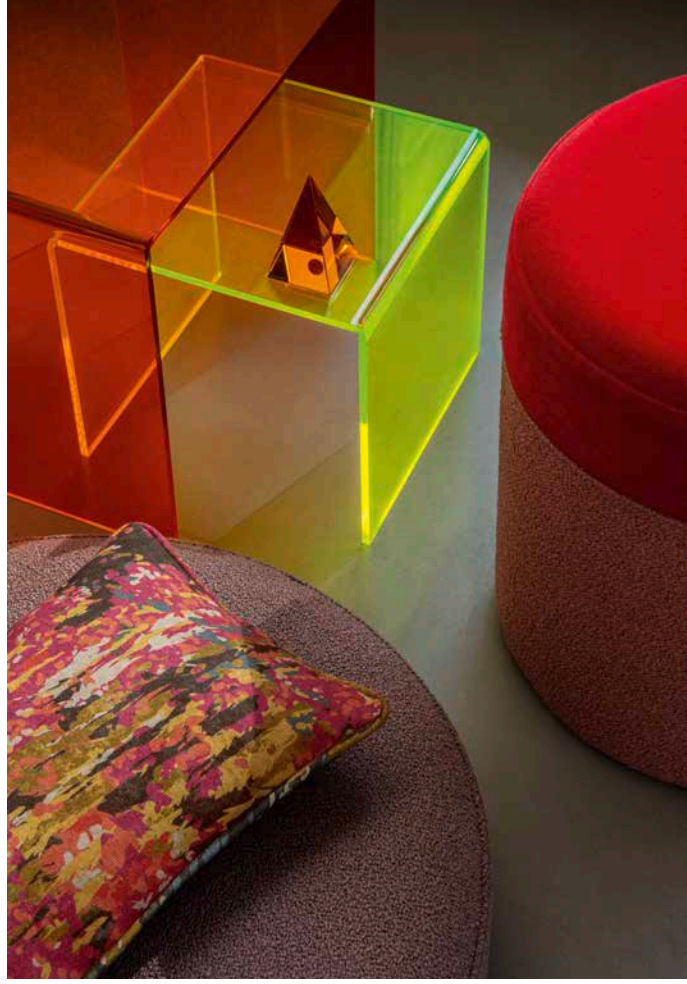


ADDICTED TO LOVE CAI790 · MAGICAL MOHAIR CAI757 · GOLD DUST CAI767 · BE FREE CAI759

ASCENDENT RELOADED CAI758 · MAGICAL MOHAIR CA1757 · COSMIC GARDEN CA1776 · GARDEN OF DREAMS CA8277

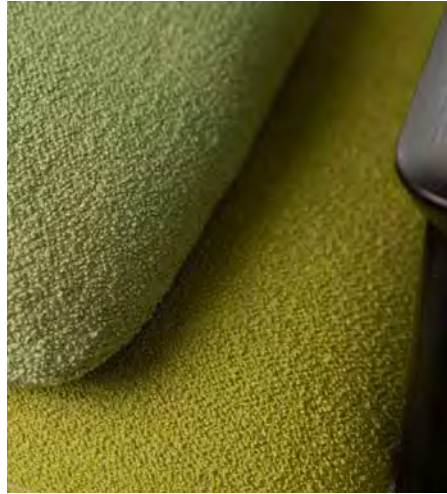


BE A REBEL CAI778



ASCENDENT RELOADED CAI758 · MAGICAL MOHAIR CAI757 · COSMIC GARDEN CAI776

ASCENDENT RELOADED CA1758



ASCENDENT RELOADED CA1758



EXPANDING TEXTILE HORIZONS

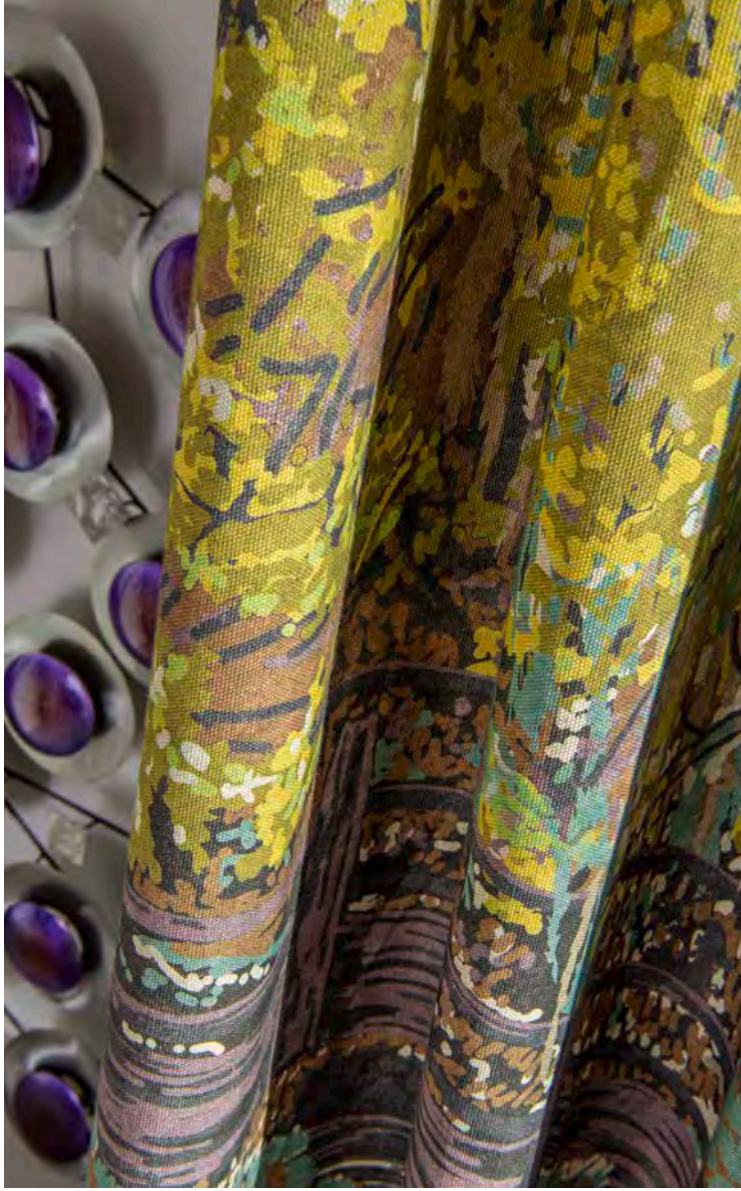
Since its launch five years ago, our fine high-end bouclé **ASCENDENT** has established itself as a real favourite in the **CARLUCCI** collection. Its huge worldwide success in our interior-enthusiast community inspired us to go one step further and to raise this elegant upholstery fabric to a new level through an optimised construction and composition as well as an extensive colour update.

Embrace the future of textiles with
ASCENDENT RELOADED's luxury.

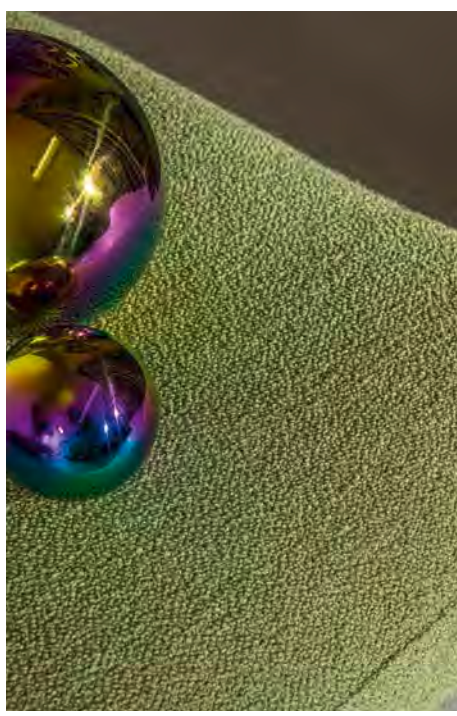
COSMIC GARDEN CA1776 · GARDEN OF DREAMS CA8277 · ILLUMINATED CA1801 · OPAQUE VELVET CA1805 · THE WILD ONE CA7649



COSMIC GARDEN CAI776



BE FREE CAI759 · GARDEN OF DREAMS CA8277 · COSMIC WORLD CA8276
COSMIC LEAVES CA8272 · ASCENDENT RELOADED CAI758



KISSED BY A SPARKLE

KISSED BY A SPARKLE takes us on a journey into unknown spheres – the stars shine while our gaze wanders over metallic surfaces in a world where past and future merge together. This theme plays with sophisticated, shimmering fabrics and imaginative motifs. Inspired by old porcelain, the designs take on a tender, fragile character. At the same time, an iridescent velvet and metallic yarns create a mystical depth.

KISSED BY A SPARKLE offers a variety of furnishing fabrics with three-dimensional character and graphic designs. Shimmering, softly mélanged satins meet elegant, semi-transparent qualities. A print based on the ancient craft of kintsugi, a dense velvet with a fantastic floral design in confident colours and an elegant jacquard with lurex accents round off the theme.









GOLD DUST CA1767 · CITY VELVET RELOADED CA7832



COSMIC FLOWERS CA1774





FELICITY CA1808 · COSMIC FLOWERS CA1785 · IRRESISTIBLE CA1800 · IN THE LINE CA1798 · THE WILD ONE 7649 · COSMIC BLOOM CA8278

KISSED



FELICITY CA1808 · COSMIC FLOWERS CA1785 · THE WILD ONE 7649

FELICITY CA1808 · IRRESISTIBLE CA1800 · IN THE LINE CA1798

BY A SPARKLE



ILLUMINATED CA1801 · INGENIOUS CA1799 · IRRESISTIBLE CA1800 · IN THE LINE CA1798



IN THE LINE CA1798



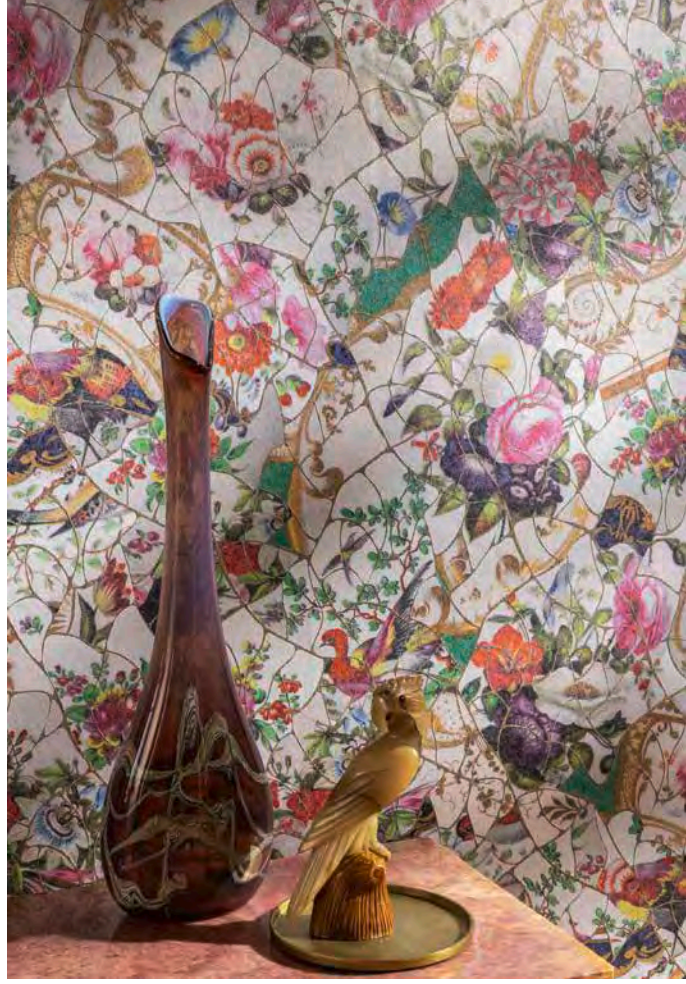
ILLUMINATED CA1801 · INGENIOUS CA1799 · IRRESISTIBLE CA1800

ILLUMINATED CA1801 · INGENIOUS CA1799 · IRRESISTIBLE CA1800 · IN THE LINE CA1798 · HOLD THE STARS CA1784





TRUE LOVE CA1809 · KINTSUGI CA1785 · OPAQUE VELVET CA1805



KINTSUGI WALLS CA8725

TRADITION MEETS ZEITGEIST

KINTSUGI WALLS, just like the matching printed decoration fabric, captivates with its wonderful all-over design. It was inspired by the classic Japanese technique of **KINTSUGI**. The design features hand-painted porcelain pieces with a cream white or a deep black ground that are reassembled with a golden lacquer paste. This effect is especially pronounced on the high-quality fleece material as well as on the authentic linen-viscose ground.

Blending tradition with modern elegance.

OPAQUE VELVET CA1805 · KINTSUGI CA1785 · KINTSUGI WALLS CA8725



OPAQUE VELVET CA1805 · CALL ME CA1806



OPAQUE VELVET CA1805 · CALL ME CA1806



OPAQUE VELVET CA1805



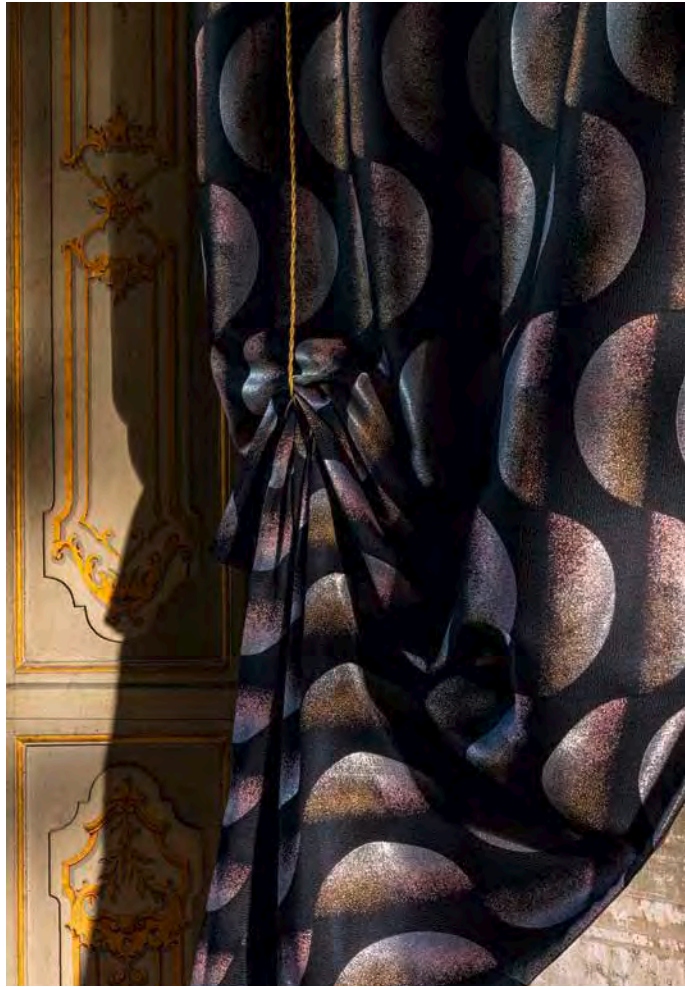
OPAQUE VELVET CA1805 · CALL ME CA1806





OPAQUE VELVET CA1805 · CALL ME CA1806 · KINTSUGI CA1785

CALL ME CA1806



OPAQUE VELVET CA1805 · KINTSUGI CA1785 · ADDICTED TO LOVE CA1790

KISSED

BY A SPARKLE



OPAQUE VELVET CA1805 · KINTSUGI CA1785 · CALL ME CA1806

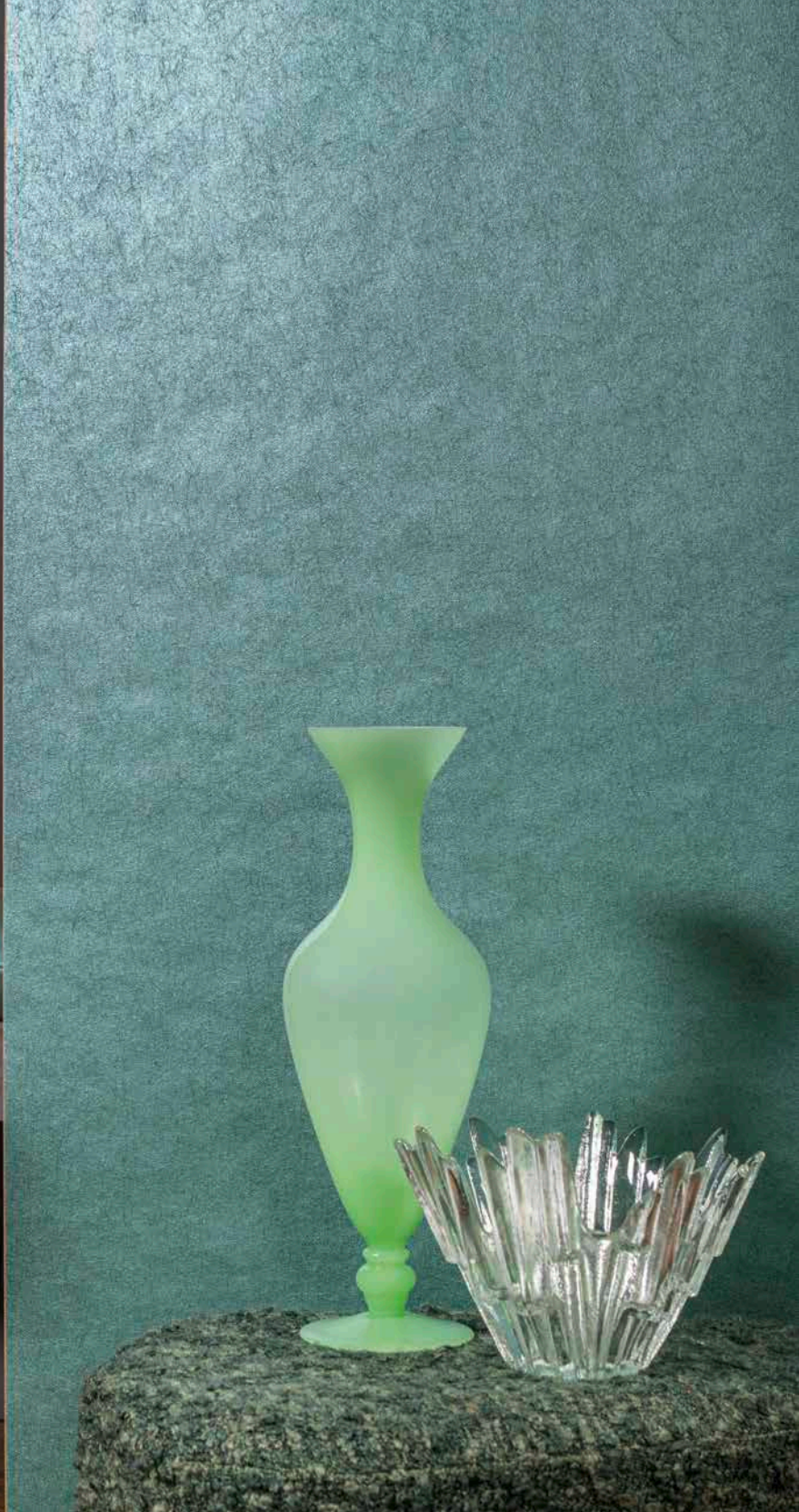
COSMIC BIRD CA8279 · CITY VELVET RELOADED CA7832 · GOLD DUST CA1767 · COSMIC FLOWERS CA1774



TALISMAN CA1789 · CITY VELVET RELOADED CA7832 · GOLD DUST CA1767



COSMIC BIRD CA8279



SILKY RELOADED CA8178 · LIGHTYEARS CA1803 · GOLD DUST CA1767

COSMIC KISS



PHOTOGRAPHY
Verne Photography

STYLING
Evelyn Design

PRINTING
Kirchner Print.Media



EXPLORE COSMIC KISS

